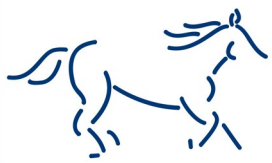


CLIFFE EQUINE



Our Dental Services include:

- Routine dental floating
- Dental charting of all horses
- Power work
- Reduction of focal overgrowths (eg hooks)
- Incisor correction
- Sedation if required
- Wolf teeth removal
- Dental extractions
- Diastema treatment
- Fillings to treat dental caries
- Tooth restoration
- Digital radiography
- Administration of nerve blocks & pain relief
- Full clinic based surgical facilities

OTHER VETERINARY SERVICES INCLUDING VACCINATIONS AVAILABLE AT TIME OF DENTAL TREATMENT.



Karl Holliman

BVM&S CertEP BAEDT MRCVS

BEVA/BVDA Approved Equine Dentistry

07831 426949

karl.holliman@cliffequine.co.uk



Karl qualified from the Edinburgh University (The 'Dick' Vet) in 1991. After a short period in mixed Practice in Scotland he moved to a mixed Practice in Yorkshire. In 1994 he joined Cliffe Veterinary Group as an Equine Vet where he is now a Partner.

Karl is also a qualified Equine Dental Technician having passed the joint British Equine Veterinary Association (BEVA) & British Veterinary Dental Association (BVDA) Exams. He is also a member of the British Association of Equine Dental Technicians (BAEDT). He now spends approximately 70% of his clinical time performing all aspects of equine dentistry.

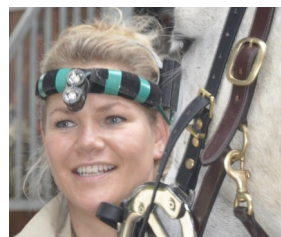
Penny Brownings

BAEDT RVN

BEVA/BVDA Approved Equine Dentistry

07811 113194

penny.brownings@cliffequine.co.uk



Penny is a qualified Veterinary Nurse. She has been working for Cliffe Equine since 1994 and was originally Head Nurse at the clinic. Penny is a qualified Equine Dental Technician having passed the joint British Equine Veterinary Association (BEVA) and British Veterinary Dental Association (BVDA) exams in September 2007 after having worked closely with Karl for many years. She is also a member of the British Association of Equine Dental Technicians (BAEDT) and is now a member of the Council.

TO BOOK OR ADVICE CONTACT:

01323 815120

www.cliffequine.co.uk

FOR FURTHER INFORMATION AND CURRENT PRICES

CLIFFE EQUINE



DENTAL SERVICES



01323 815120

www.cliffequine.co.uk

CLIFFE EQUINE DENTISTRY

Dentistry is an essential part of your horse's healthcare. We recommend a dental check-up every 6 to 12 months for maintenance and treatment of your horse's teeth.

Why?

Horses' teeth have evolved to chew grass and fibre and wear down at a rate of 2 to 3mm per year. This wear is balanced by eruption at an equal rate. Cross breeding and domestication of horses has led to the common occurrence of dental abnormalities such as over-crowding, misalignment and focal overgrowths. When a horse grazes the natural circular action required to eat grass brings the chewing surface of the opposing teeth into contact and the teeth wear down evenly. When eating hay or hard feed, the horse does not need the same circular action to chew, resulting in sharp enamel edges that can cause ulceration and pain.

Performance

Regular dental care, rasping (floating) to reduce sharp edges and 'bit-seating' can vastly improve your horse's performance. It is essential that your bit or bridle does not cause oral discomfort. Your horse will not work comfortably in an outline if it has any sharp teeth or overgrowths that restrict the free movement of the jaw.

Why Use Us?

We offer a complete and caring service, adapting to each individual horse, whether high performance athlete or child's pony. We are BAEDT qualified and registered, fully insured and work at a very high standard of dentistry.

As a Veterinary team we are able to make a full assessment, diagnosis and treatment plan for your horse, with the use of sedation and supportive pain relief if required.

We have an extensive selection of instrumentation for dental work including hand rasps, extractors and power tools. We have the advantage of administering sedation to your horse at the time of treatment, should it be required. This ensures that all procedures can be carried out at the initial examination of the horse, without having to re-schedule for a re-visit.

Areas Covered and Zone Visits

We cover a wide area, providing care throughout East Sussex and Mid Sussex. We are also in your area once a week for 'Zone Visits'. We also visit outside the normal Practice area for group booking by prior arrangement.

Advanced dental procedures

At our Equine Clinic, with our surgical facilities and experience, we can provide a comprehensive range of advanced up-to-date treatments to ensure complete dental care of your horse.

We have an Equine Periodontal Unit with high speed drill, air abrasion, flushing and vacuum. This allows us to effectively treat a range of dental diseases including painful periodontal disease, restoration ('filling') of diseased cavities of the upper teeth and root canal fillings of the incisor teeth.

We commonly perform dental extractions following diagnosis of disease such as infection or fractured teeth. Most procedures are carried out through the mouth under sedation and nerve blocks. With our facilities and digital x-ray we are well equipped to diagnose and perform all these procedures.

Karl Holliman is happy to see any cases referred from other Veterinary Surgeons or Equine Dental Technicians.

Our Aims

We are committed to provide a complete and exceptional service and to ensure optimal dental health for your horse. We keep abreast of the most modern developments in equine dentistry and reflect this in the service we provide.

